

LAKE METROPARKS

FARMIPARK

Almanac



contents

Planning for Farming Fun throughout the New Year..... 2
 Think Farmpark for Your Next Private Event..... 3
 Farmpark Calendar 4
 Echo of the Garden 6
 Dairy Breed Diversity 7

FARMPARK IS A LAKE METROPARKS FACILITY. Farmpark's mission is to help our urban society understand how farmers raise food, fiber and other products that sustain and enhance human life. *Farmpark Almanac* is published three times a year by Lake Metroparks. This publication is sent free to Farmpark members.

© 2023 Lake Metroparks, all rights reserved. lakemetroparks.com
 ISSN 1545-3162 Printed on recycled paper.

Planning for Farming Fun throughout the New Year

by Lee Homyock, *Farmpark Administrator*

In 2024, we will continue to provide members and guests the special events, education and facilities they have come to enjoy at Lake Metroparks Farmpark. Of note, the very popular Village Peddler Festival returned to Farmpark in 2023 and saw more than 11,000 visitors. Event organizers and Farmpark staff are excited to welcome them back in 2024. Farmpark's Outdoor Riding Arena was used for many events in 2023 and several outside organizations have expressed interest in using it for events. Watch lakemetroparks.com for information on additional events and exhibits that may be added to Farmpark's schedule.

Please mark your calendar with the following special event dates. We look forward to your visits in 2024!



EARL LINABURG

Visit goto.lakemetroparks.com/farmpark-events for details.

COVER PHOTO
 Ice Festival by Nicole Gruden

LAKE COUNTY PROBATE JUDGE
 Mark J. Bartolotta

BOARD OF PARK COMMISSIONERS
 Gretchen Skok DiSanto, Frank J. Polivka, John C. Redmond

EXECUTIVE DIRECTOR
 Paul Palagyi

EDITORS
 Lee Homyock, Michelle Lohr, Sharon Metzger

DESIGNER
 Meredith Nicoletti

Lake Metroparks does not discriminate on the basis of race, color, religion, gender, age, nationality or disability in employment, services, programs or activities. Should special assistance be required in visiting facilities and/or participating in programs or activities of Lake Metroparks, please call 800-669-9226 or 440-358-7275 at least 48 hours in advance.

2024 Special Events

Fun Time on the Farm Indoor Play Area January 20 through March 3

Ice Festival* January 26 & 27

Farmer Monday February 19

Maple Sugaring Weekends March 2 & 3, 9 & 10

Maple Sugaring Pairing Dinner*‡ March 8

Quilts 2024 March 22 through April 28

Breakfast with the Bunny*‡ March 23 & 24, 29 & 30

Total Solar Eclipse 2024 April 8

Lamb Jam April 27 & 28

Country Pairing Dinner*‡ May 17

HorseFest May 18 & 19

The Spring Showdown Lamb Show May 26

Railroads in the Park June 1 & 2

FarmFest* July 13 *FREE admission*

Historical Engine Society Antique Power Exhibition July 26, 27 & 28

Vintage Ohio Wine Festival*‡ August 2 & 3

Milk & Honey Weekend August 17 & 18

Corn Maze September 3 through October 6

Senior Day September 12

Village Peddler Festival*‡ September 14 & 15

Apple Harvest Pairing Dinner*‡ September 20

Apple Harvest Weekend September 21 & 22

Horsepower Weekend September 28 & 29

Corn & Pumpkin Weekend October 5 & 6

Halloween Drive-thru*‡ October dates TBD

Breakfast with Santa*‡ November 30 & December 1, 7 & 8, 14 & 15, 21 & 22

Country Lights Drive-thru*‡ December dates TBD

*Special hours and/or rates apply.
 ‡ Tickets must be purchased in advance.

Think Farmpark for Your Next Private Event

by Nicole Gruden, *Sales & Corporate Event Specialist*

Farmpark offers multiple picnic shelters and the recently renovated Hilltop Machinery Building and shelter for your next special event.

The Hilltop is a wonderful location for weddings, receptions, graduation parties, family reunions or any social gathering. It offers a rustic indoor/outdoor location with an amazing view overlooking the farm. Its beautiful arbors, large fire pit and amazing scenery create a magical space for any event. The Machinery Building can comfortably seat 150 guests indoors. The outdoor shelter can accommodate 75 to 150 guests depending on seating arrangements. The Hilltop can be rented from 9 am to 11 pm seven days a week. Rental fees are determined by the time of your rental and can include admission to the park for up to 50 guests.

Farmpark provides tractor-drawn or horse-drawn wagons to transport your guests from the Visitor Center up to the Hilltop for your event. Farmpark's horse-drawn wagonette and vis-à-vis are also available for transport to make your event extra special.

The Pond Shelter and Festival Field Shelter can accommodate 75 guests. They can be rented for birthday parties, picnics or other smaller social gatherings. These shelters are available during park hours from 9 am to 5 pm. Park admission is not included with the rental of these shelters.

Our large Main Pavilion is located closest to the parking lot. It's located outside of the park's Visitor Center, but is a great space utilized for company picnics, family reunions or other large events. The Main Pavilion can accommodate 200 to 250 guests. It has its own small play area near the pavilion and grills for cooking out. The Main Pavilion can be rented from 9 am to 11 pm. Admission to the park is not included in the rental fees for this space. The pavilion will undergo renovations this spring—check out the progress on your next visit to Farmpark.



Please contact Farmpark's Sales & Corporate Event Specialist Nicole Gruden at 440-256-2122 x3037 or ngruden@lakemetroparks.com for information and pricing.



Farmpark CALENDAR



Farmpark is open year-round Tuesday through Sunday, 9 am to 5 pm. Closed Mondays (except Presidents' Day), Thanksgiving, Christmas Eve, Christmas & New Year's Day.

Regular Farmpark admission is waived for Lake County residents on "FREE DAY" (Proof of Lake County residency required).

Admission during Vintage Ohio and Village Peddler Festival is not included as a membership benefit as special hours and rates apply.

For more information about Farmpark programs and events:
440-256-2122 • 800-366-3276 • lakemetroparks.com

1 JANUARY

7 Lake County FREE DAY

16 Lake County FREE DAY

FUN TIME ON THE FARM INDOOR PLAY AREA

Presented by Playground World

January 20 through March 3, 9 am to 5 pm

Farmpark's Exhibit Hall features an indoor playground welcoming springtime early. Visit our indoor dairy and enjoy other animal encounters while on the farm.

ICE FESTIVAL

Sponsored by Sylvan Learning of Mentor

Friday, January 26, 5:30 to 8 pm

Saturday, January 27, 9 am to 5 pm

Shake the winter blues that fall upon Ohioans every January. The Farmpark Ice Festival kicks off Friday night with the unveiling of the Farmpark-themed ice chair and an ice carving demonstration. The night ends with a battle between fire and ice! On Saturday, come witness some of the best ice carvers from around the country take part in a speed carving competition. Take photos with your family and friends on our full-sized ice chair and ice slide. Then come sit by a fire pit and warm up with hot cocoa and s'mores (additional charge). Plus, many other winter-themed family fun activities.

2 FEBRUARY

4 Lake County FREE DAY

FARMER MONDAY

Monday, February 19

Enjoy a special day at Farmpark on Presidents' Day with fun for the whole family! Find out what a farmer does during the winter months through hands-on activities and games. See lambs display their acrobatics in the Arena. Bring your little farmers out for fun farm experiences! No registration required.

20 Lake County FREE DAY

3 MARCH

MAPLE SUGARING WEEKENDS

Sponsored by Richards Maple Products & Sylvan Learning of Mentor

March 2 & 3, 9 & 10

Visitors enjoy a wagon ride to the Woodland Center to witness the process of producing maple syrup as sap is collected from taps through a network of tubing and pumps. Follow the steps from collecting and boiling sap to producing maple syrup and candy. Discover how trees are tapped, help gather sap from bucket taps and learn how to make maple syrup in your own backyard! Sample maple syrup and candy. Pancakes will be served all day in the café for an additional fee.

3 Lake County FREE DAY

MAPLE SUGARING PAIRING DINNER

Presented by Sylvan Learning of Mentor

March 8, 5:30 to 9 pm

Fee: \$80 per adult 21 and older, pre-registration required at lakemetroparks.com or by calling 440-358-7275

Celebrate the signs of spring and sap flowing in the maple trees by joining us for an evening of good wine, food and maple sugaring. Take a tour of the sugarbush, then enjoy a delicious meal prepared with wine pairings by a local vineyard. This event is for adults 21 and older only. The menu will be maple-themed and the chef and winemaker will be on hand to discuss recipes and wine pairings. Vegetarian option available.

19 Lake County FREE DAY

QUILTS 2024

March 22 through April 28

Farmpark presents one of Ohio's finest quilt shows with up to 200 quilts and quilt-related works on display. Includes a judged show of quilts completed by regional artists from Northeast Ohio and neighboring states. Show attendees can vote for the People's Choice award. Quilt workshops offered with pre-registration.

BREAKFAST WITH THE BUNNY

March 23 & 24, 29 & 30, 9 am or 10:30 am

Fee: \$25 ages 2 and older, \$5 younger than 2

Bunny visits children in the café. After breakfast, take a photo with Bunny in his arbor in the Theater. Visit lambs in the Well Bred Shed.

Ticket sale dates: (online only)

• Lake County residents & Farmpark members*:
Mon., February 12 at 8 am

• Open sales: Tue., February 13 at 8 am *Farmpark membership must be current as of noon on Monday, Feb. 5 and remain current on day of purchase.

4 APRIL

7 Lake County FREE DAY

TOTAL SOLAR ECLIPSE 2024

Presented by Sylvan Learning of Mentor

Monday, April 8, 9 am to 5 pm

If you haven't heard, April 8 is a big day for Northeast Ohio and Lake County. For about four minutes in mid-afternoon, the day will darken into night, stars will emerge and animals will think dusk has fallen early. Join us for a day filled with excitement leading up to the Total Solar Eclipse in mid-afternoon. Hands-on experiments, interactive activities, music, planetarium shows and so much more will build your anticipation. Solar eclipse viewing glasses will be provided for guests in attendance. Parking is limited. FREE, no registration required

16 Lake County FREE DAY

QUILT VENDOR DAYS

April 26, 27 & 28

A three-day shopping event of local quilt shop vendors intermingled in the quilt show! Demonstrations on the latest tools and techniques will be offered. A fun weekend to end the quilt show!



LAMB JAM

April 27 & 28

An entire weekend of sheep thrills where you can shear a sheep, spin wool, weave on a loom, and learn to make felt. Join the party in the barn for photo ops with Little Bo Peep and her real live sheep, woolly crafts to make & take, and Lamb Jam sessions where you'll learn to do the pasture shuffle. The border collies will also show off their moves, along with the Western Reserve Spinners and Weavers Guild. Be sure to join us for a wooly good time!



Thank you to these sponsors



Echo of the Garden

by Valerie F. Reinhardt, Horticulture Manager

Plants provide so much—they paint a tapestry that enriches our world through all of our senses—taste, touch, smell, sight and even sound. We taste the flavor of our food, we feel textures they produce from soft cotton to hard wood, we smell the perfumes of the flower and herbs, hear the rustle of leaves and see the many shapes and colors of the plants around us.

We have learned to capture some of the color of nature though natural plant dyes over the years. Skilled artisans know how to pull colors from plants and have perfected time-honored methods to produce reds, blues, yellows and every color in between. Would you like to know how to capture the colors and patterns from your garden?

Eco printing does just that. This method doesn't require expert knowledge, just some simple items and an eye for creativity. Using fresh leaves and flowers, you can create interesting and colorful patterns on silk, wool and cotton. **Eco printing uses steam to capture the pigments from plant material.** Fabric is dipped into water that has been

mordanted with copper, iron or alum to help set the dye. Mordants are naturally-occurring water-soluble metallic salts that bind dye to fabric. To make a simple mordant, soak a piece of copper pipe or rusty nails in a solution of vinegar and water for a couple of days or use an alum solution. Iron provides good



Mordants

outlines to capture leaf patterns while copper or alum bring out brighter colors.

After being soaked in either plain water or a chosen mordant, plant material is laid out on the fabric. The cloth is laid on a piece of plastic that can be folded over the top so that the plant material and cloth are sandwiched in between the plastic. The fabric is then rolled up on a wooden dowel or PVC pipe and wound tightly with twine. Steam the bundle for about an hour and a half, then let it sit for a day. The fun comes when you unveil your creation by rinsing off the plant material to see what patterns and colors are left behind.

While some plants easily produce prints, others only give hints of color. It can be fun and challenging to create an interesting and unique item to wear. Mordants are the key to bringing out the colors and patterns because they allow the colors to adhere to the fabric. Some plants don't need mordants if they contain tannins (walnut, oak or maple leaves for example). Tannins work as natural mordants on plant-based fibers. Some flowers like coreopsis and marigold provide nice oranges, yellows and golds depending on the mordant and eucalyptus offers good prints in varying shades of orange. **If you are interested in watching the process or learning how to make dye from the plants around you, visit the Plant Science Center at Lake Metroparks Farmpark in April for Lamb Jam.** We will demonstrate how to do eco printing, how to extract dyes from garden plants and we will also explore the history of plant dyes. Join us!



Laying out



Folding over



Rolling up



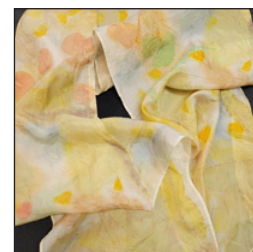
Steaming



Unrolling plastic



Revealing colors & shapes



Finished scarf

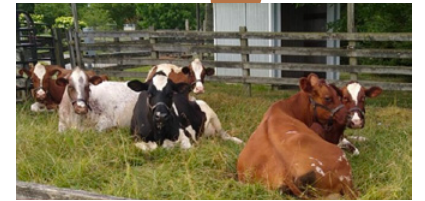


Eucalyptus & horse chestnut

Dairy Breed Diversity

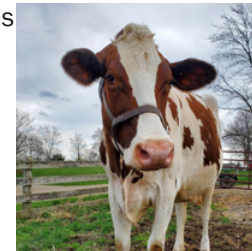
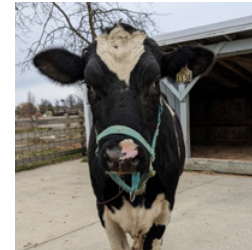
by Jenny Greskovich, Livestock Manager

If you have visited Farmpark's dairy, you have surely noticed the different breeds of cows that call the Farmpark home. In the United States, there are seven different breeds of dairy cow—all with unique features that make them desirable dairy animals. Here are a few of the breeds we have at Farmpark:



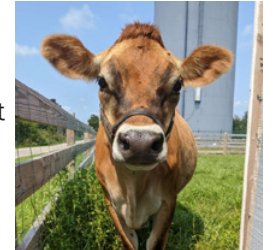
Holstein

Holsteins are by far the most popular cow on dairy farms—more than 90 percent of dairy cows in the U.S. are Holsteins! Most Holsteins have the iconic black-and-white print that is easily recognizable, but there is a variety called red Holstein that has reddish-brown spots instead of black. The red color comes from a recessive gene that shows itself from time to time. Because the gene is recessive, red Holsteins are much more rare than black and whites. Holsteins are the largest breed of dairy cow and thus produce more milk—this is why they tend to be the most popular breed.



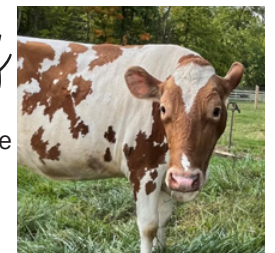
Jersey

Jerseys are the smallest breed of dairy cow. They are brown all over, usually with dark or black markings on their faces, legs and tails. Although they are the smallest, Jerseys are efficient producers—they produce more pounds of milk per pound of body weight compared to all other dairy breeds. Jersey milk is high in butterfat thus giving dairy products rich taste and texture.



Guernsey

Guernsey cows usually have yellowish and white spots, although some can be a bit darker in color. They are efficient eaters and are able to produce more milk per pound of feed than other dairy breeds. Guernsey milk contains a high concentration of butterfat and beta carotene (a source of vitamin A that can give the milk a slightly yellowish or golden color). This, coupled with beautiful gold-colored spots, gives this breed the iconic nickname golden Guernsey.



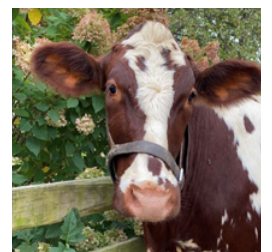
Ayrshire

Ayrshires are a breed known for their hardiness and adaptability. Ayrshires have red and white spots, which tend to be smaller and scattered throughout the body. They produce moderate butterfat in their milk that is easily converted into yogurt, cheese and ice cream. Nutritionally, their milk is very desirable because it is very balanced—it has just the right amount of fats and proteins without being too rich.



Milking shorthorn

Milking shorthorns are considered a dual-purpose breed because they can be raised for either market or dairy. They vary in color: mostly red, red and white spots or a roan color unique to the breed. Milking shorthorns have a favorable protein/fat ratio in their milk, making them a desirable breed. They are especially good at converting grass and forage into milk, meaning they can thrive on less grain-based feed.



Come out to Farmpark to take a closer look at these unique breeds!



Lake Metroparks Farmpark
 8800 Euclid Chardon Rd. (Rt.6)
 Kirtland, Ohio 44094
 440-256-2122
 800-366-3276
 lakemetroparks.com

Presorted Standard
 U.S. Postage
 PAID
 Willoughby, Ohio
 Permit No. 10

FARMPARK Gift Shop

unique country gifts

Take home a little bit of the country.

440-256-2122 x3161

No admission charge to visit gift shop, excludes most special events.
 VISA, MasterCard and Discover accepted • Discount for Farmpark members

Take home charming country gifts, unique items for the home and garden, greeting cards, Naked Bee lotion, Dionis goat milk products, Farmpark's own maple syrup as well as assorted snacks and drinks.

