

# LAKEFRONT TRAIL PHASE 3 CONCEPT PLAN

FEBRUARY 2023

PREPARED FOR



1228 EUCLID AVE  
SUITE 320  
CLEVELAND, OH 44115  
216.413.5930

PREPARED BY



1228 EUCLID AVE  
SUITE 320  
CLEVELAND, OH 44115  
216.413.5930

DRAFT







# SUMMARY

**The Lakefront Trail - Phase 3 Concept Plan will serve as a guiding document to create an active and ecologically driven Lakefront Park along Northeast Ohio's largest stretch of publicly accessible shoreline.**

The park will create unique gathering spaces for visitors to enjoy and celebrate the Lake Erie shoreline by capitalizing on existing topography highlighting lakefront views. By providing the necessary infrastructure for passive outdoor recreation opportunities, visitors will be able to hike, exercise, birdwatch, and fish along scenic Lake Erie. This project acts as a catalyst in restoring and enhancing ecological systems including native shoreline vegetation and wildlife habitat.

A ten foot multi-purpose asphalt trail is designed to run along the shoreline creating a continuous path connecting Painesville Township Park and the Village of Fairport Harbor. Lakefront access points as well as scenic overlooks are strategically placed throughout the site to provide picturesque views at multiple vantage points. The Lakefront Trail - Phase 3 Concept Plan transforms an unused space into a recreational destination in Northeast Ohio.

# GOALS + OBJECTIVES



## PASSIVE RECREATION

Provide trails for passive outdoor recreation opportunities including hiking, physical fitness, birdwatching, and fishing.



## SCENIC VIEWS

Capitalize on existing topography to highlight lakefront views.



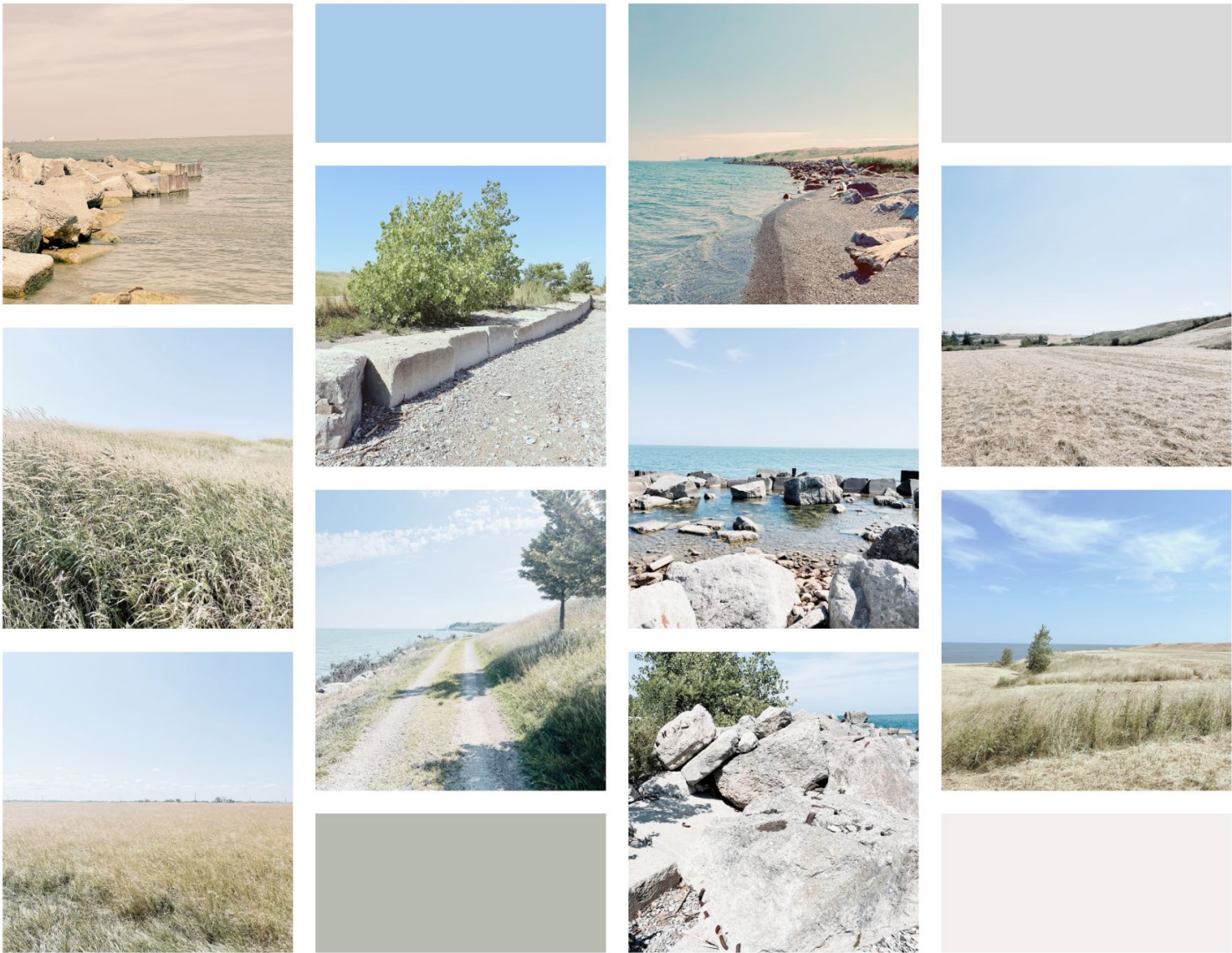
## ECOLOGY

Restore and enhance ecological systems including native vegetation and wildlife habitat.



## COMMUNITY

Create unique gathering spaces for visitors to enjoy and celebrate the Lake Erie Shoreline.





# VISION

**LEGEND**

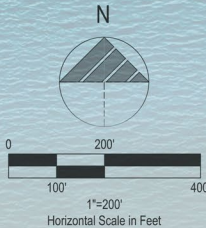
PROPOSED ACCESS DRIVE

PROPOSED 10' ASPHALT TRAIL

PROPOSED 10' GRAVEL PATH

POTENTIAL ACTIVITY AREA

ACTIVITY AREA





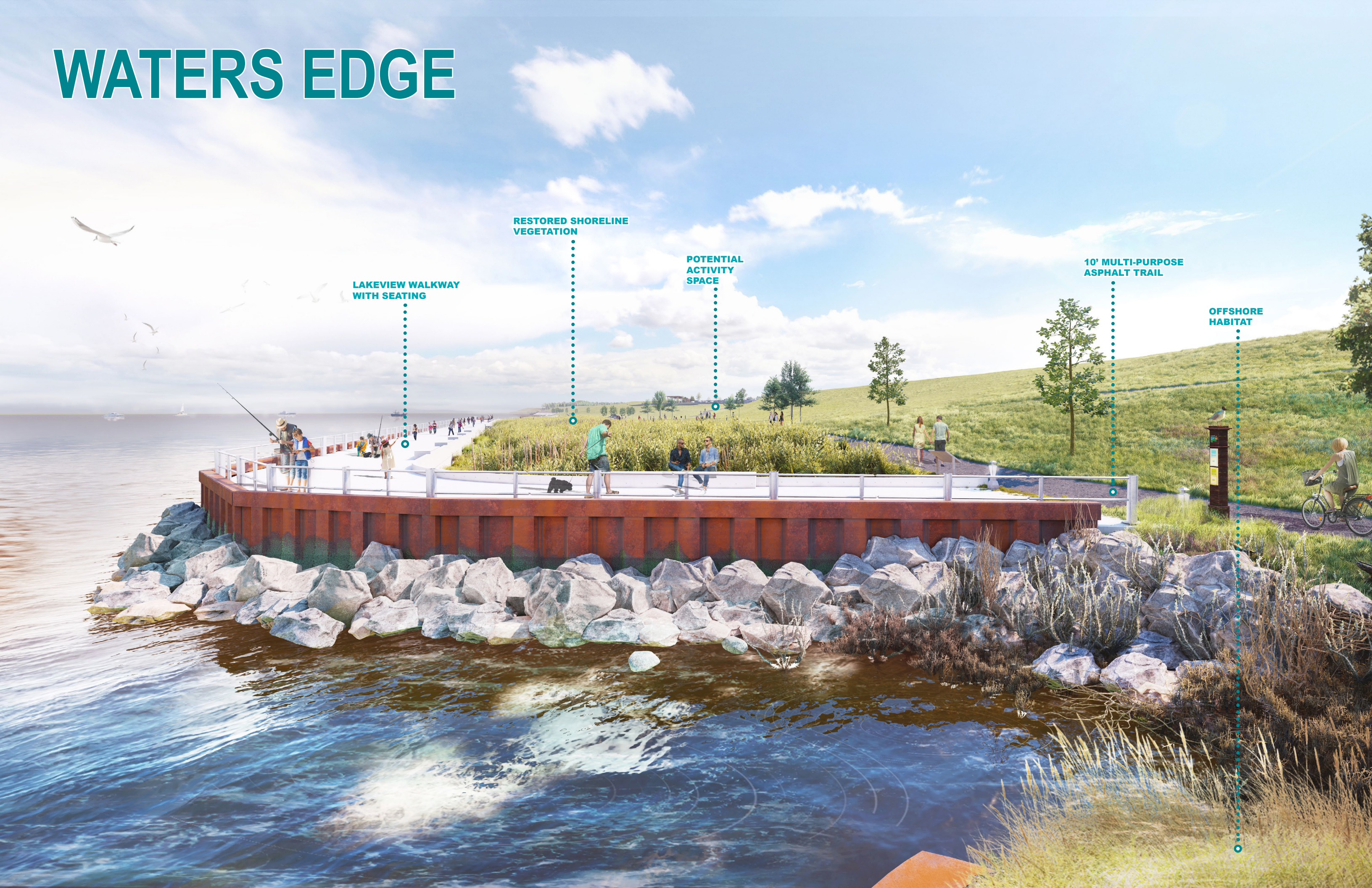
# WATER'S EDGE

Water's Edge is at the lowest elevation in the park creating unique opportunities to interact with the water. This location has an existing, yet deteriorating structure that extends out into Lake Erie. This structure will be used as the foundation to fill and create a lake view concrete walkway. The area between the walkway and proposed asphalt trail will be converted into open space to restore shoreline vegetation and provide habitat for local wildlife. In addition, barrel like structures that are currently placed parallel to the shoreline could be utilized to create offshore habitat environments. The Water's Edge area has the opportunity to include additional activity spaces such as formal or informal play areas, outdoor classrooms, and vegetated meadows. This area will serve as the gateway between Fairport Harbor and the Park.





# WATERS EDGE



LAKEVIEW WALKWAY  
WITH SEATING

RESTORED SHORELINE  
VEGETATION

POTENTIAL  
ACTIVITY  
SPACE

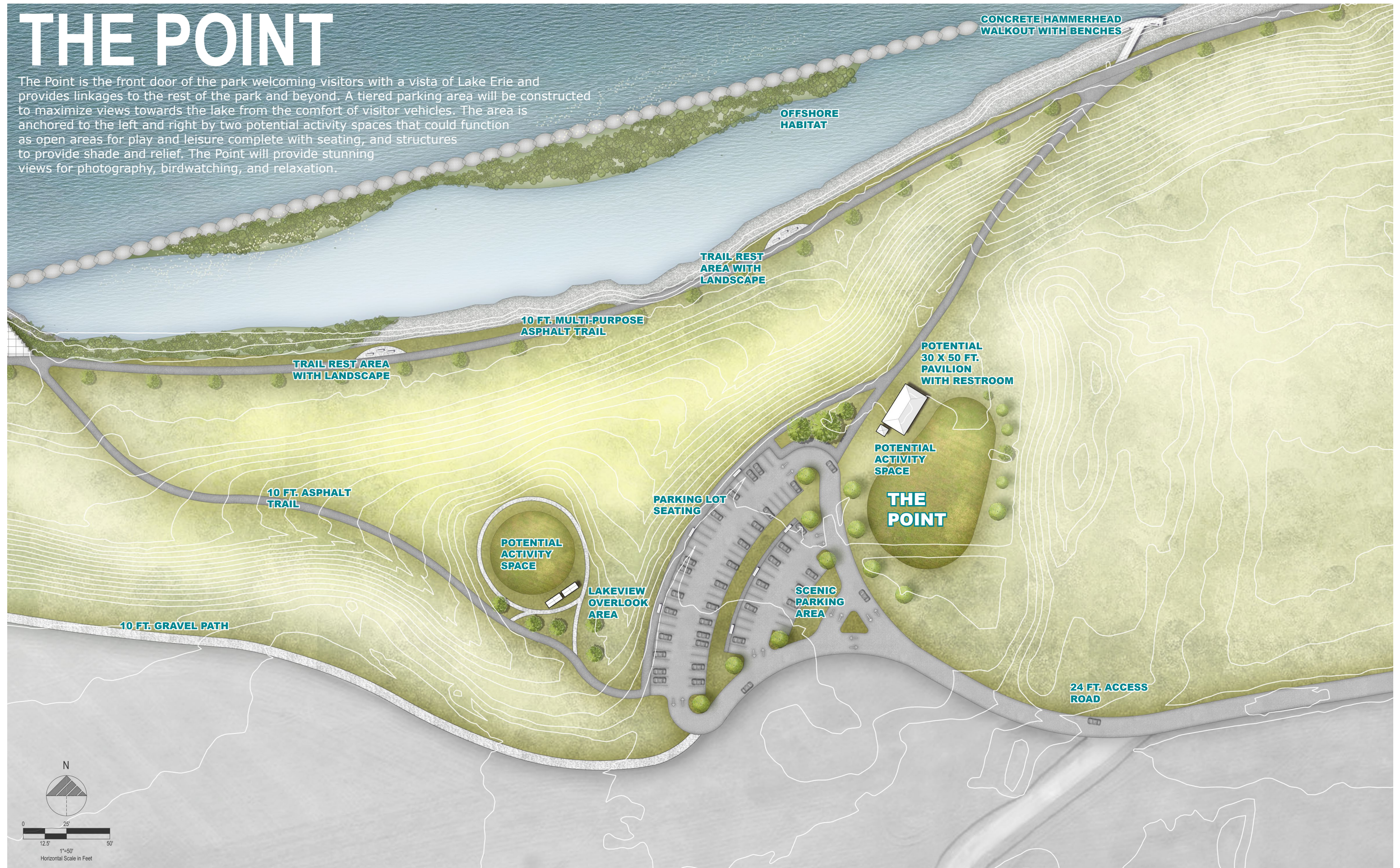
10' MULTI-PURPOSE  
ASPHALT TRAIL

OFFSHORE  
HABITAT



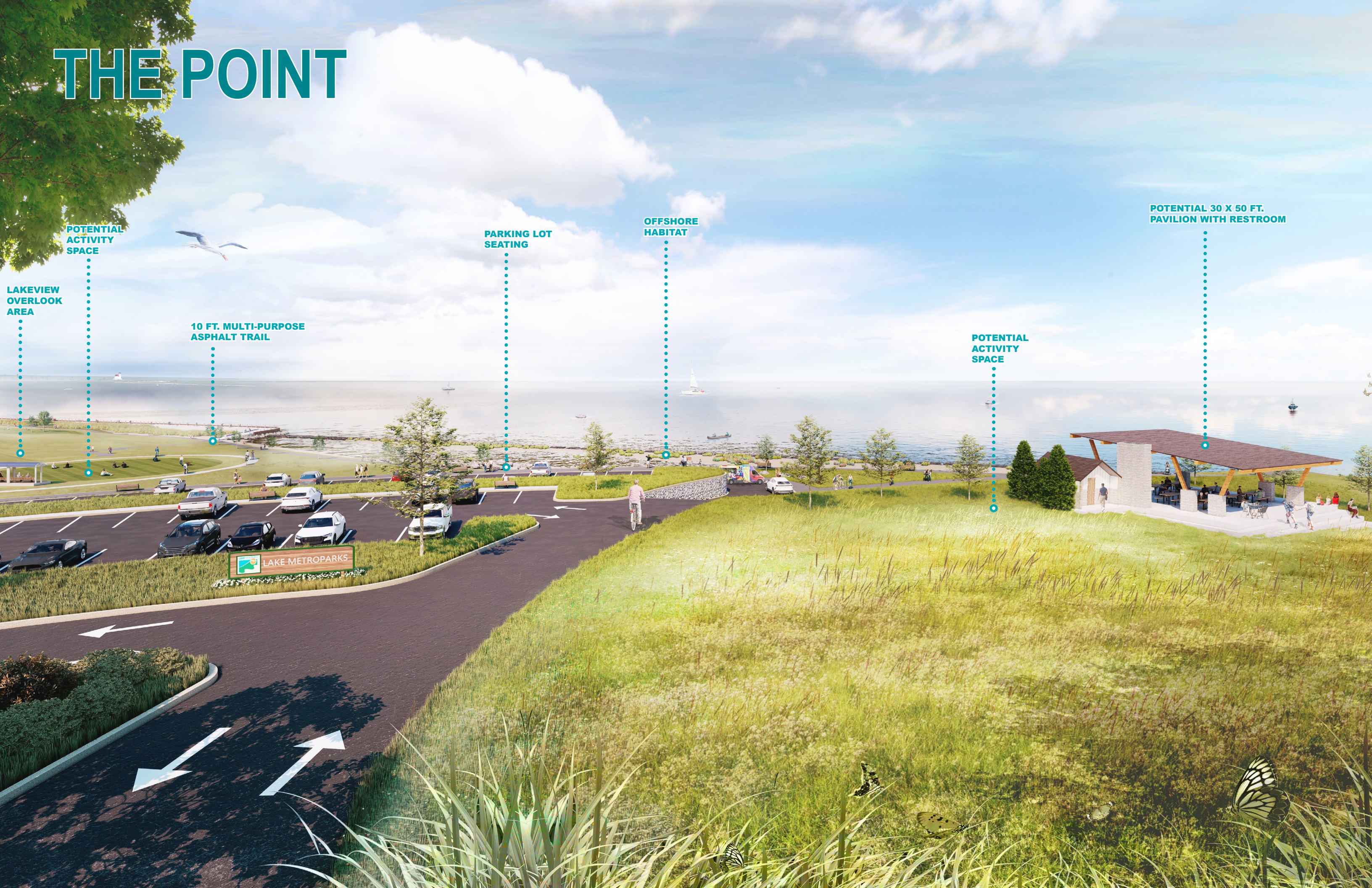
# THE POINT

The Point is the front door of the park welcoming visitors with a vista of Lake Erie and provides linkages to the rest of the park and beyond. A tiered parking area will be constructed to maximize views towards the lake from the comfort of visitor vehicles. The area is anchored to the left and right by two potential activity spaces that could function as open areas for play and leisure complete with seating, and structures to provide shade and relief. The Point will provide stunning views for photography, birdwatching, and relaxation.





# THE POINT



LAKEVIEW  
OVERLOOK  
AREA

POTENTIAL  
ACTIVITY  
SPACE

10 FT. MULTI-PURPOSE  
ASPHALT TRAIL

PARKING LOT  
SEATING

OFFSHORE  
HABITAT

POTENTIAL  
ACTIVITY  
SPACE

POTENTIAL 30 X 50 FT.  
PAVILION WITH RESTROOM



# LAKEVIEW

The Lakeview space is imagined as 'the park within the park'. The area includes recreational opportunities such as fishing and birding, as well as small gathering spaces and gardens. The parking area acts as a scenic overlook and is surrounded by dense foliage creating a natural canopy providing relief from the sun. Lakeview serves as the prominent rest spot between Painesville Township Park and the Village of Fairport Harbor, ultimately resulting in Lakeview becoming a destination of it's own.





# LAKEVIEW

TRAIL TO  
PAINESVILLE  
TOWNSHIP PARK

SMALL  
GATHERING  
SPACE

LAKEVIEW  
OVERLOOK  
AREA

CONCRETE HAMMER-  
HEAD WALKOUT WITH  
BENCHES

SCENIC  
PARKING  
AREA

10' ASPHALT  
MULTI-PURPOSE  
TRAIL





