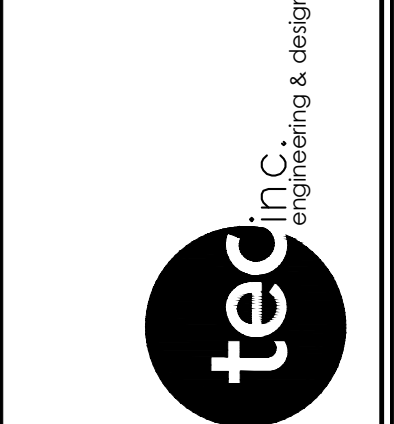


REV. NO.	DESCRIPTION	DATE	BY
	FOR PERMIT	4/20/26	TGP

33851 Curtis Blvd., 216  
 Essex, Ohio 44025  
 T 440.953.8789  
 F 440.953.1289  
 www.tecinceng.com

33851 Curtis Blvd., 216  
 Essex, Ohio 44025  
 T 440.953.8789  
 F 440.953.1289  
 www.tecinceng.com

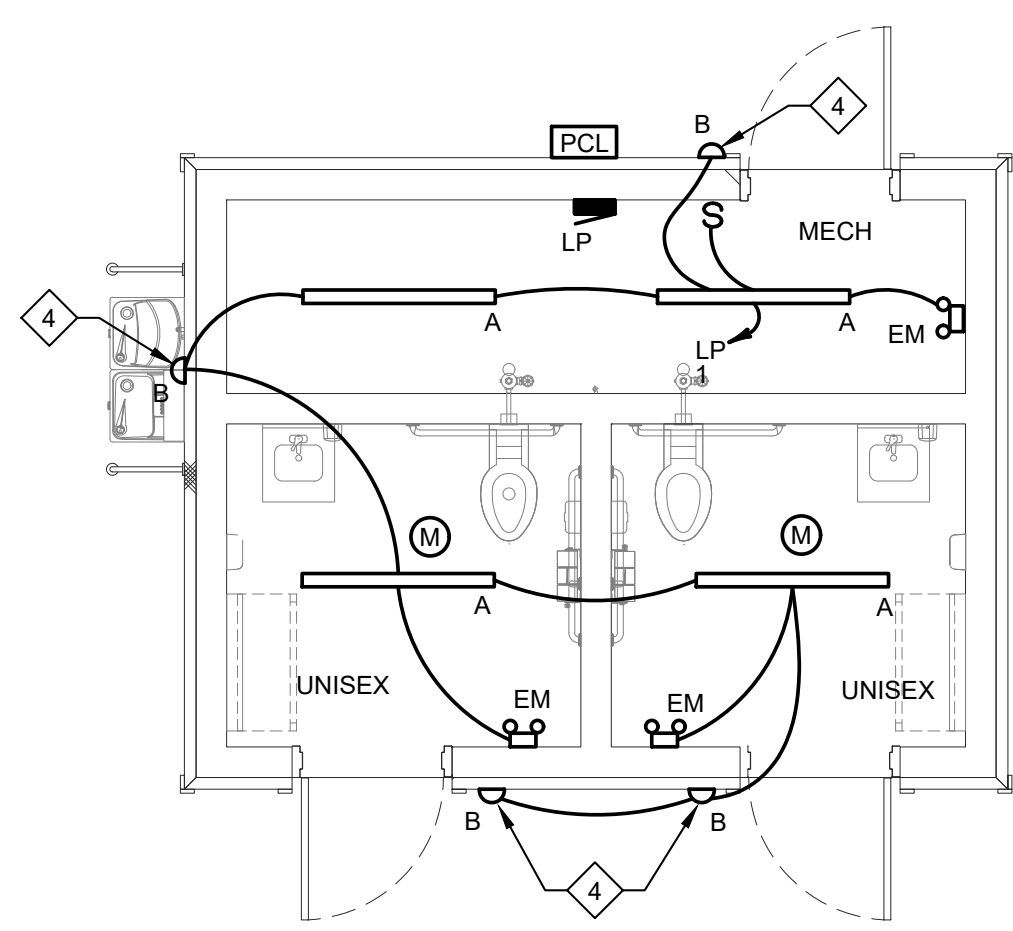


**LAKEFRONT LODGE  
 PARK RESTROOM**  
 30435 LAKESHORE BLVD  
 WILLOWICK, OHIO

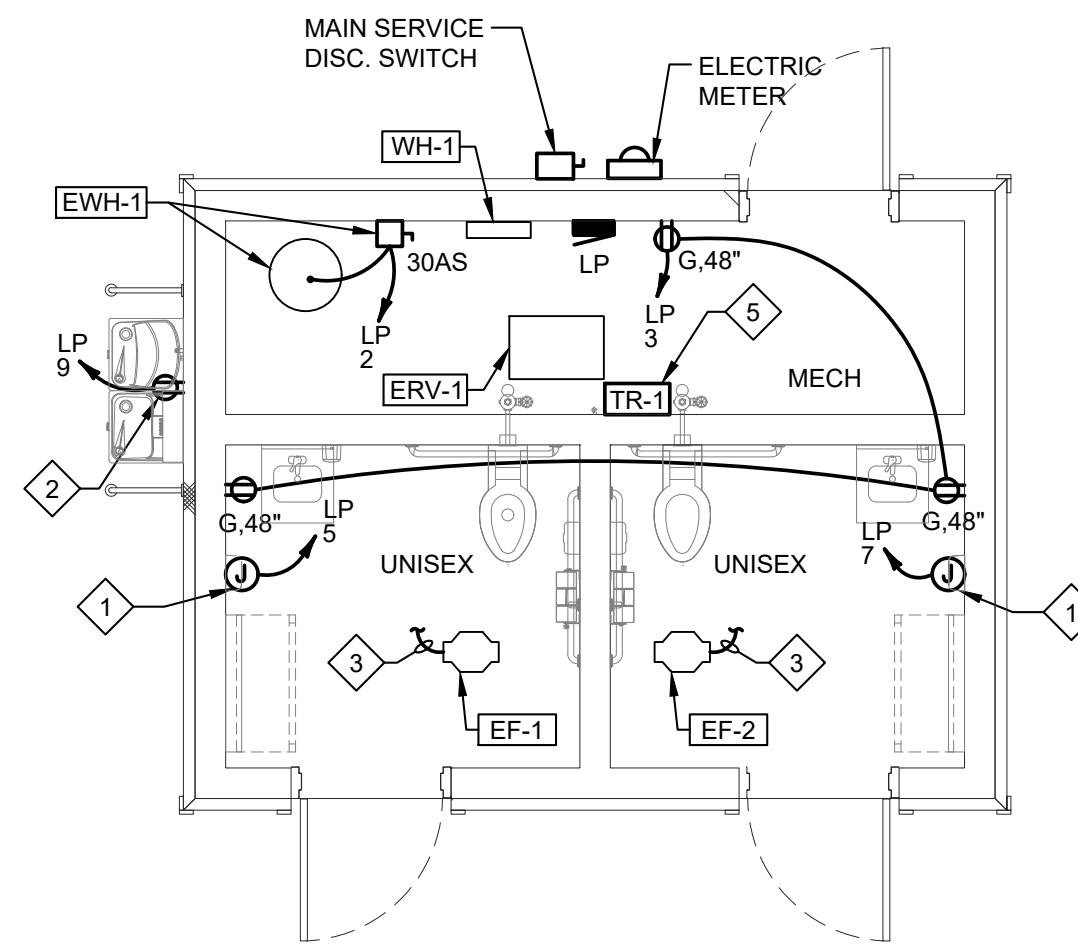
**ELECTRICAL PLANS,  
 SYMBOL LEGEND,  
 ONE LINE DIAGRAM  
 AND DETAILS**

DATE:	03/27/26
DESIGNED:	MG
APPROVED:	TGO
TEC PROJECT:	26134
SHEET NO.	

**E-1**



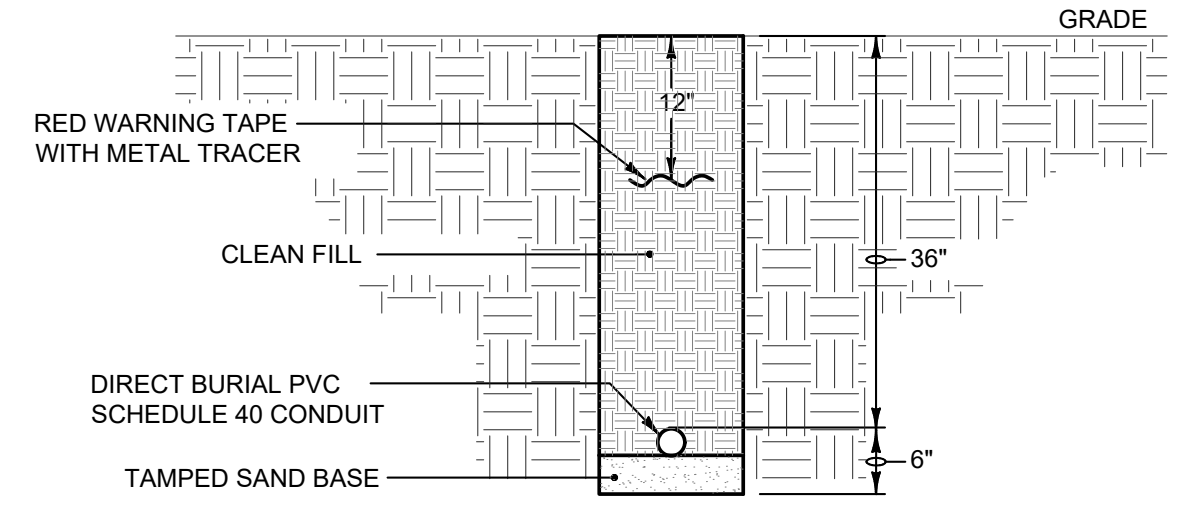
**RESTROOMS ENLARGED  
 LIGHTING PLAN**  
 SCALE: 1/4" = 1'-0"



**RESTROOMS ENLARGED  
 POWER PLAN**  
 SCALE: 1/4" = 1'-0"

**RESTROOMS & PAVILION NOTES:**

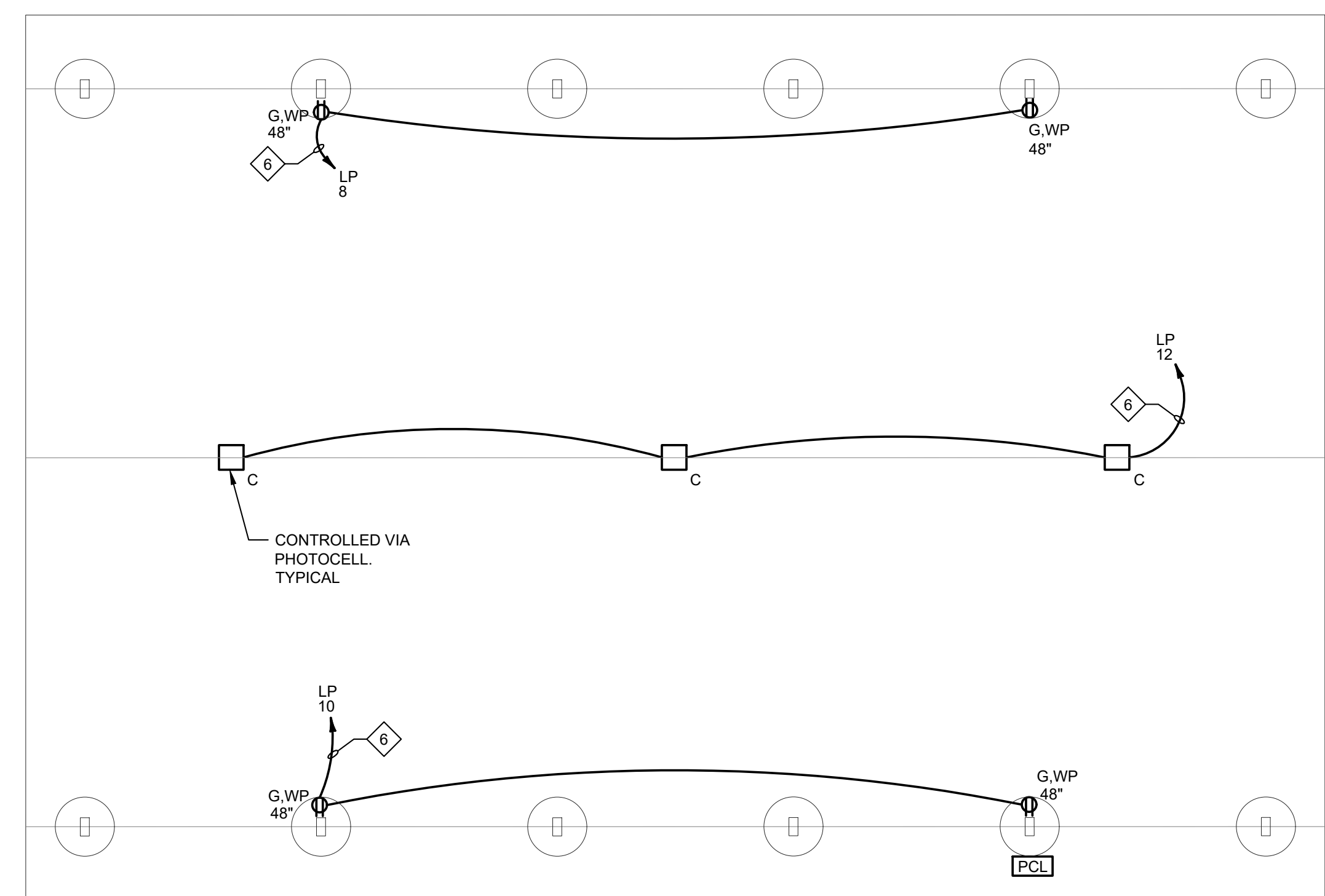
- ELECTRIC HAND DRYER 120V, 1.0KW. WIRE TO DEDICATED CIRCUIT BREAKER INDICATED.
- WATER FILLING STATION 120V, 1.0KW ASSUMED. WIRE TO DEDICATED 120V 20A GFCI RATED CIRCUIT BREAKER INDICATED.
- CONNECT EXHAUST FAN TO THE RESTROOM LIGHTING CIRCUIT - EXHAUST FAN SHALL OPERATE ON/OFF WITH RESTROOM LIGHTS.
- LIGHT CONTROLLED VIA EXTERIOR WALL MOUNTED PHOTOCELL
- LOW VOLTAGE TRANSFORMER FOR TOILET SENSORS. WIRE PER MANUFACTURER'S INSTRUCTIONS.
- UNDERGROUND BRANCH CIRCUIT FED FROM RESTROOM PANEL 'LP'; REFER TO SITE PLAN FOR CONDUIT ROUTING.



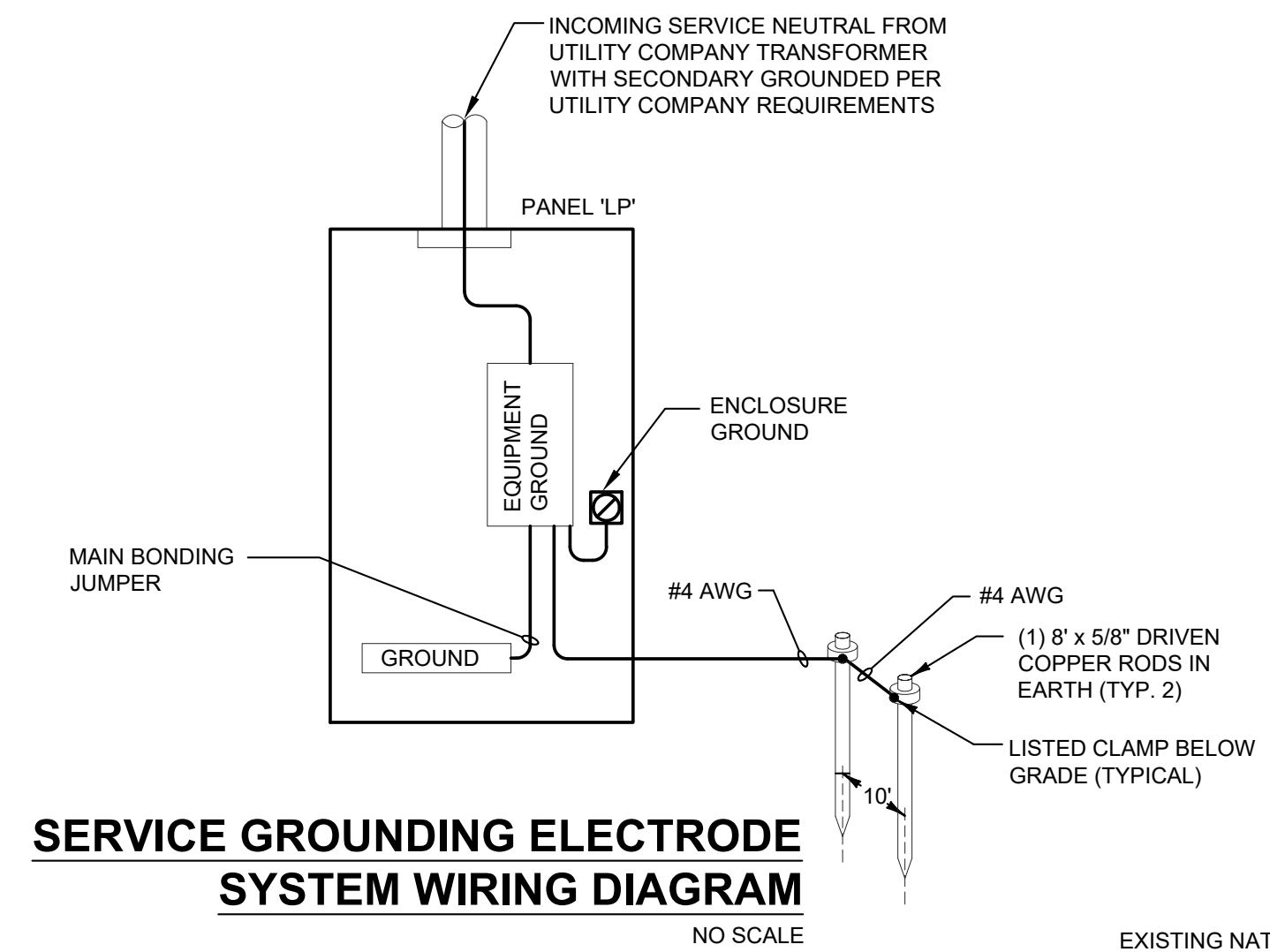
**UNDERGROUND DIRECT  
 BURIAL CONDUIT**  
 NO SCALE

**ELECTRICAL SYMBOLS**

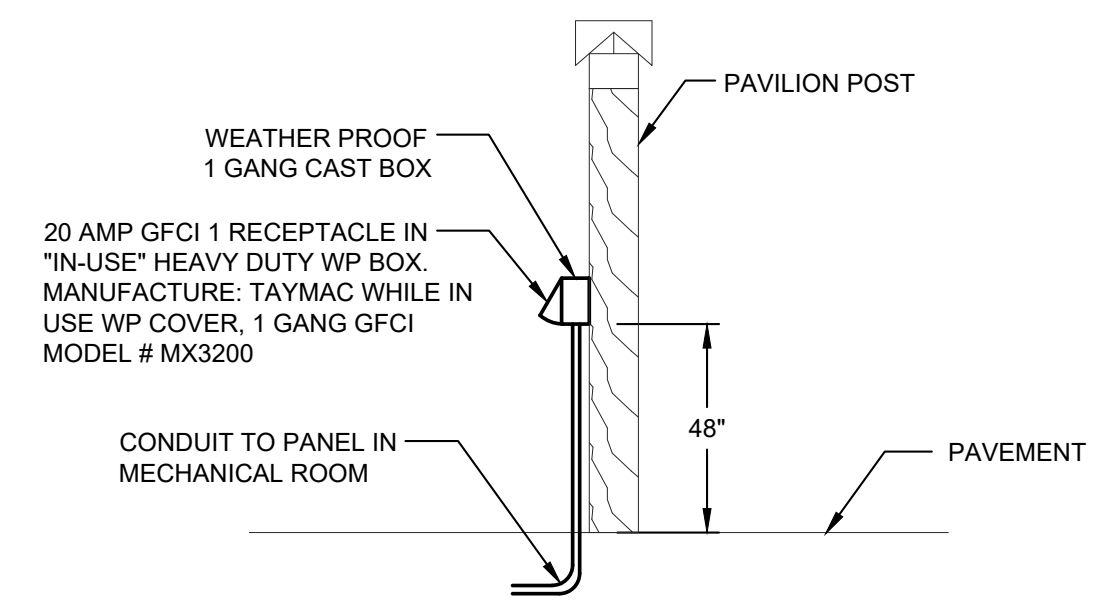
- BRANCH CIRCUIT HOMERUN TO PANEL "A", CIRCUIT #3 AND #5. PROVIDE THE PROPER QUANTITY OF MIN SIZE 12 AWG CONDUCTORS FOR THE CIRCUIT(S) INDICATED. A SEPARATE GROUNDING CONDUCTOR IS REQUIRED FOR ALL BRANCH CIRCUITS.
- S SINGLE POLE SWITCH - MOUNTING AT 48" A.F.F.
- M OCCUPANCY SENSOR SWITCH - CEILING MOUNTED. PROVIDE ONE POWER PACK PER ZONE TO BE CONTROLLED. POWER PACKS ARE NOT SHOWN ON PLANS
- PCL EXTERIOR WALL MOUNTED PHOTOCELL W/ WEATHERPROOF COVER.
- TR-1 TRANSFORMER - SLOAN, EL-154: (50 VA (WATTS)) (0.42A)
- A LIGHT FIXTURE TYPE 'A' - SEE LIGHTING SCHEDULE.
- EM EMERGENCY BATTERY PACK, WALL MOUNTED
- Φ DUPLEX RECEPTACLE - MOUNTING AT 18" A.F.F.
- Φ 48" DUPLEX RECEPTACLE - INDICATES MOUNTING AT 48" A.F.F.
- Φ G DUPLEX RECEPTACLE - GROUND FAULT CIRCUIT INTERRUPTER (GFCI) TYPE
- WP GFCI TYPE DUPLEX RECEPTACLE IN WEATHERPROOF ENCLOSURE
- JUNCTION BOX - MOUNTING HEIGHT AND SIZE AS REQUIRED
- 60AS UNFUSED DISCONNECT SWITCH - "60/2" INDICATES 60 AMPERE SWITCH RATING AND POLES
- M ONE-LINE DIAGRAM REPRESENTATION OF A METER
- AH-3 PLANNING TAG, REFER TO PLANS FOR DESCRIPTION
- AH-3 INDICATES POWER CONNECTION TO AIR HANDLER #3-REFER TO EQUIPMENT CONNECTION SCHEDULES FOR REQUIREMENTS
- A.F.F. ABOVE FINISHED FLOOR
- ASI/AF/AT AMPERE SWITCH/AMPERE FUSE/AMPERE TRIP
- MLO MAIN LUG ONLY
- MCB MAIN CIRCUIT BREAKER



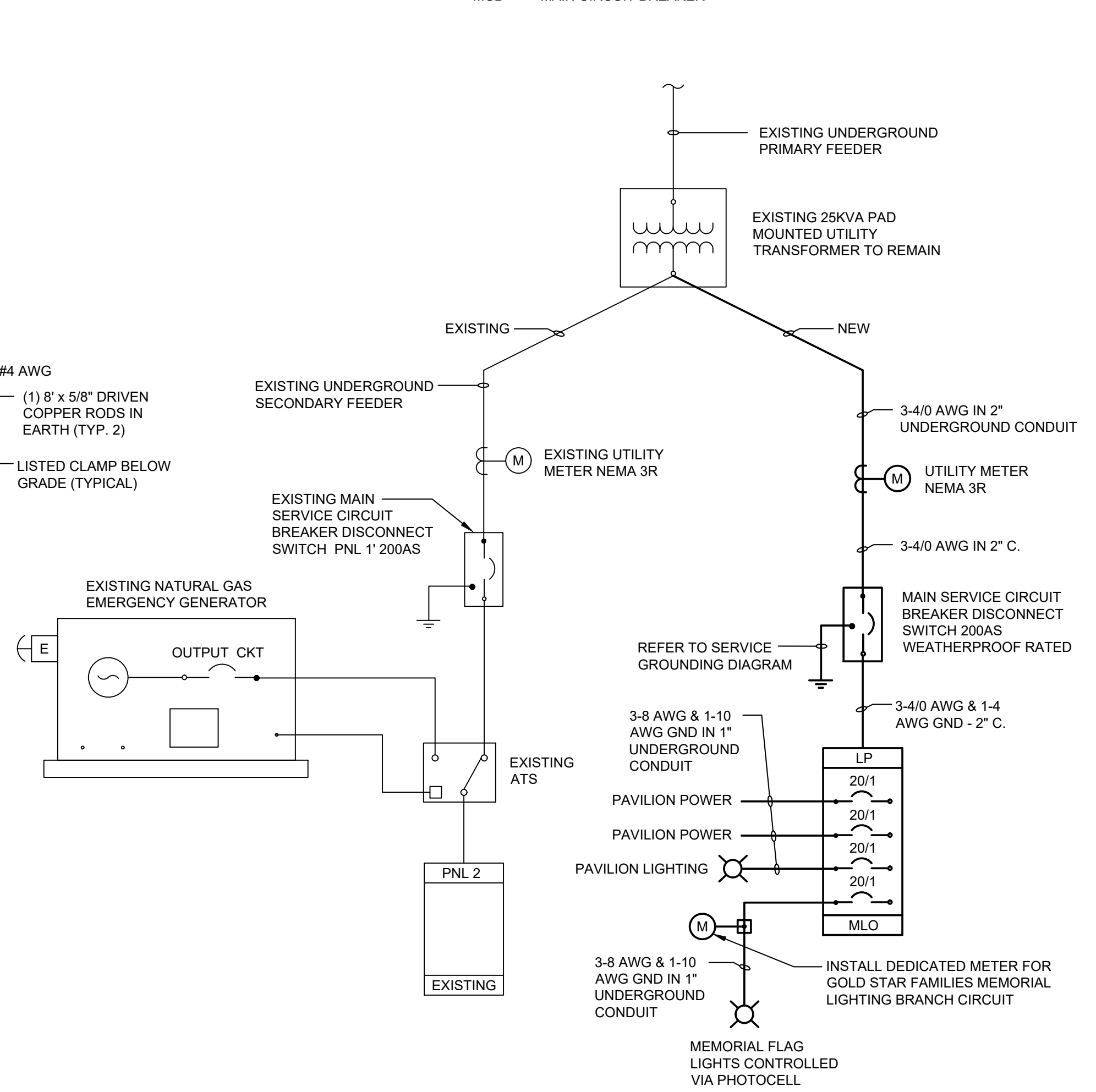
**PAVILION ENLARGED ELECTRICAL PLAN**  
 SCALE: 1/4" = 1'-0"



**SERVICE GROUNDING ELECTRODE  
 SYSTEM WIRING DIAGRAM**  
 NO SCALE

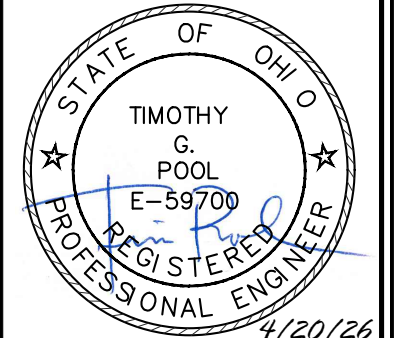


**PAVILION RECEPTACLE DETAIL**  
 NO SCALE



**EXISTING ONE LINE DIAGRAM**  
 NO SCALE

**NEW ONE LINE DIAGRAM**  
 NO SCALE



### SECTION 260000 - ELECTRICAL SPECIFICATIONS

- PART 1 GENERAL
- PROVIDE ALL LABOR AND MATERIAL FOR ALL SYSTEMS AS INDICATED ON THE DRAWINGS AND SPECIFIED HEREIN, OR REASONABLY IMPLIED, TESTED AND READY FOR USE BY THE OWNER.
  - REFER TO THE ARCHITECTURAL AND OTHER CONTRACT DOCUMENTS FOR THE PROJECT. ELECTRICAL WORK AND/OR COORDINATION ITEMS INDICATED ON THESE DOCUMENTS ARE A PART OF THE ELECTRICAL SCOPE OF WORK.
  - DISCREPANCIES BETWEEN EACH DIVISION'S DOCUMENTS OR BETWEEN THE DOCUMENTS AND THE EXISTING SITE CONDITIONS SHALL BE BROUGHT TO THE ATTENTION OF THE OWNER'S REPRESENTATIVE BEFORE SUBMITTING A BID.
  - THE ELECTRICAL SCOPE OF WORK INCLUDES, BUT IS NOT LIMITED TO THE FOLLOWING EQUIPMENT OR SYSTEMS:
    - LIGHTING AND LIGHTING CONTROLS
    - WIRING DEVICES
    - BRANCH CIRCUIT PANELBOARDS
    - UTILITY SERVICE INSTALLATION DRAWINGS
    - GROUNDING AND GROUNDING SYSTEMS
    - NEW POWER UTILITY SERVICES
    - CONNECTIONS AND POWER CIRCUITS FOR EQUIPMENT PROVIDED UNDER ANOTHER DIVISION, OR BY THE OWNER.
  - SUBMITTALS, OR SHOP DRAWINGS ARE REQUIRED FOR THE FOLLOWING EQUIPMENT OR SYSTEMS:
    - LIGHTING AND LIGHTING CONTROLS
    - WIRING DEVICES
    - BRANCH CIRCUIT PANELBOARDS
    - UTILITY SERVICE INSTALLATION DRAWINGS
    - PROVIDE SUBMITTALS ONLY FOR EQUIPMENT LISTED ABOVE. ALL SUBMITTALS MUST BE REVIEWED FOR PROPER CONTENT AND ACCURACY BY THE CONTRACTOR BEFORE SUBMISSION TO THE ENGINEER.
    - SUBMITTALS SHALL BE REVIEWED ONLY FOR GENERAL COMPLIANCE AND NOT FOR DIMENSIONS, QUANTITIES, ETC. THE SUBMITTALS THAT ARE RETURNED SHALL BE USED FOR PROCUREMENT. THE RESPONSIBILITY OF CORRECT PROCUREMENT REMAINS SOLELY WITH THE CONTRACTOR. THE SUBMITTAL REVIEW SHALL NOT RELIEVE THE CONTRACTOR OF RESPONSIBILITY FOR ERRORS OR OMISSIONS AND DEVIATIONS FROM THE CONTRACT REQUIREMENTS. ELECTRONIC COPIES ARE REQUIRED. REFER TO DIVISION 1 FOR EXACT QUANTITIES AND OTHER SUBMITTAL REQUIREMENTS.
  - CONTRACTOR SHALL OBTAIN ALL REQUIRED LOCAL PERMITS, LICENSES, AND SCHEDULE NECESSARY INSPECTIONS FOR THE WORK. LMP SHALL REIMBURSE THE CONTRACTOR FOR ALL PERMIT AND INSPECTION FEES. NO ALLOWANCES FOR PERMITS, INSPECTIONS, OR UTILITY COSTS SHALL BE INCLUDED IN THE BASE BID OR CONTRACT. LMP SHALL BE RESPONSIBLE FOR ALL PAYMENTS DUE TO UTILITY COMPANIES, INCLUDING BUT NOT LIMITED TO PERMANENT AND TEMPORARY SERVICE INSTALLATION CHARGES. THE CONTRACTOR SHALL COORDINATE WITH UTILITY COMPANIES AND ARRANGE REQUIRED WORK ORDERS AS NECESSARY FOR PROJECT EXECUTION.
  - TEMPORARY POWER AND LIGHTING SHALL BE PROVIDED TO OSHA REQUIREMENTS FOR THE CONSTRUCTION PERIOD. TEMPORARY UTILITY POWER WILL BE BROUGHT TO THE SITE UNDER THIS CONTRACT, BUT THE OWNER WILL PAY FOR RELATED MONTHLY CHARGES.
  - SUBMISSION OF A BID ASSUMES KNOWLEDGE OF ALL DOCUMENTS AVAILABLE RELATED TO THE WORK, AS WELL AS EXISTING CONDITIONS MADE AVAILABLE FOR REVIEW AND INSPECTION DURING THE BIDDING PERIOD. THIS CONTRACTOR SHALL INFORM THE OWNER'S REPRESENTATIVE OF ANY UNKNOWN AND/OR CONCEALED CONDITIONS AFFECTING THE NEW WORK, AS THEY ARE DISCOVERED.
  - WHEREVER THE WORD "PROVIDE" IS USED, IT SHALL MEAN: FURNISHED AND INSTALLED BY THE ELECTRICAL CONTRACTOR.
  - THE ELECTRIC SERVICE AND ALL NON-CURRENT CARRYING METAL PARTS OF THE ELECTRICAL SYSTEM SHALL BE GROUNDED IN ACCORDANCE WITH ARTICLE 250 OF THE NATIONAL ELECTRICAL CODE, AND ALL OTHER APPLICABLE CODES AND STANDARDS. ALL BRANCH CIRCUITS AND FEEDERS SHALL BE GROUNDED BY MEANS OF AN INSULATED GROUNDING CONDUCTOR INSTALLED WITHIN EACH RACEWAY. THE ENTIRE GROUNDING SYSTEM SHALL BE TESTED FOR CONTINUITY AT THE COMPLETION OF THE WORK.
  - THE NEW MATERIAL AND LABOR SHALL BE GUARANTEED FOR A PERIOD OF ONE YEAR FROM THE ACCEPTANCE BY THE OWNERS' REPRESENTATIVE. NOTE THAT CERTAIN SPECIFIED ITEMS OF EQUIPMENT MAY CARRY A LONGER PERIOD OF WARRANTY.
- PART 2 PRODUCTS
- ALL MATERIAL, EQUIPMENT INSTALLATION AND LABOR SHALL BE IN ACCORDANCE WITH THE LATEST APPLICABLE NATIONAL, STATE AND LOCAL CODES AND NFPA PUBLICATIONS, AS INTERPRETED BY THE AUTHORITY HAVING JURISDICTION. THIS CONTRACTOR MUST ADHERE TO PROPER INSTALLATION TECHNIQUES IN ACCORDANCE WITH INDUSTRY STANDARDS AS DEFINED BY ANSI AND NECA. IN ADDITION, OSHA REQUIREMENTS AND ANY SITE-SPECIFIC SAFETY STANDARDS SHALL BE FOLLOWED FOR SAFETY OF PERSONNEL ON SITE. NEW EQUIPMENT SHALL BE UL AND/OR CSA LISTED.
  - WIRING DEVICES SHALL BE "SPECIFICATION GRADE" AND SHALL BE OF ONE MANUFACTURER, WITH MATCHING PLASTIC PLATES. HUBBELL DEVICES ARE LISTED; LEVITON AND PASS & SEYMOUR DEVICES WITH EQUAL SPECIFICATIONS MAY BE SUPPLIED. IVORY DEVICES AND PLATES SHALL BE PROVIDED, UNLESS OTHERWISE REQUESTED. THE OWNERS' REPRESENTATIVE WILL CONFIRM COLORS OF DEVICES AND PLATES DURING THE SUBMITTAL APPROVAL PROCESS. UNLESS NOTED OTHERWISE, STANDARD DEVICES SHALL BE:
    - LIGHT SWITCHES: 120/277 VOLT, QUIET TYPE, HUBBELL #1221 (SINGLE POLE), #1223 (THREE-WAY) AND #1224 (FOUR-WAY).
    - GENERAL PURPOSE RECEPTACLES: 125 VOLT, 20 AMPERE, 2-POLE, 3-WIRE, DUPLEX TYPE, NEMA 5-20R, HUBBELL #5362.
    - GFCI RECEPTACLES: 125 VOLT, 20 AMPERE, 2-POLE, 3-WIRE DUPLEX TYPE, NEMA 5-20R, HUBBELL #GFR-5362 SELF-TESTING AND FEED-THRU TYPE CAPABLE OF PROTECTING DOWNSTREAM CIRCUIT DEVICES.
    - EXTERIOR RECEPTACLES: PROVIDE A GFCI RECEPTACLE WITH A TAYMAC #MX4380S, METAL EXTRA DUTY "IN-USE" COVER AND HORIZONTAL MOUNTED BOX.
    - LINE-VOLTAGE CEILING OCCUPANCY SENSORS: WATTSTOPPER #DT-355 SERIES, DUAL TECHNOLOGY, 120/277 VOLT, 800W/1200W RATED, WITH 360° COVERAGE. SENSOR SWITCH TYPE CMR-PDT-9 IS CONSIDERED AN EQUIVALENT.
    - WIRING DEVICES SHALL BE PROVIDED WITH A GROUNDED WIRE CONNECTED TO THE DEVICE AND/OR THE OUTLET BOX.
  - ALL WIRING SHALL BE COPPER, 90 DEGREE C. RATED, TYPE THHN, THWN OR XHHW, WITH 600-VOLT INSULATION UNLESS INDICATED OTHERWISE ON THE DRAWINGS. THE MINIMUM WIRE SIZE IS #12 FOR 120-VOLT BRANCH CIRCUIT; #10 SHALL BE USED FOR CIRCUIT LENGTHS GREATER THAN 150 FEET.
- PART 3 EXECUTION
- COORDINATE THE ELECTRICAL WORK WITH ALL OTHER TRADES ON SITE, INCLUDING CORE DRILL LOCATIONS AND FEEDER ROUTINGS. PROVIDE LAYOUT DRAWINGS FOR ELECTRICAL ROOM AND SUBMIT COPIES TO THE OWNER'S REPRESENTATIVE FOR REVIEW AND APPROVAL BEFORE ROUGH-IN CONDUITS AND EQUIPMENT.
  - SERVE AND CONNECT ALL ELECTRICAL EQUIPMENT FURNISHED BY OTHER DIVISIONS OR OWNER. COORDINATE ALL OUTLET LOCATIONS AND CONNECTION REQUIREMENTS WITH THE CONTRACTOR FURNISHING THE EQUIPMENT. BEFORE CONNECTING ANY PIECE OF EQUIPMENT, CHECK THE NAMEPLATE RATING AGAINST THE INFORMATION SHOWN ON THE CONTRACT DOCUMENTS AND CALL ANY DISCREPANCIES TO THE ATTENTION OF THE OWNER'S REPRESENTATIVE.
    - SPARE CIRCUIT BREAKERS SHALL BE IDENTIFIED AS SUCH AND SHALL BE LEFT IN THE "OFF" POSITION AT THE CONCLUSION OF THE WORK.
  - LOCATE AND PROVIDE ALL OPENINGS IN FLOORS, CEILINGS, AND WALLS TO ALLOW FOR CONDUIT PENETRATIONS.
    - SUBMIT TO THE OWNER'S REPRESENTATIVE ALL LOCATIONS AND SIZES OF OPENINGS WHICH MUST BE PROVIDED FOR THE WORK BEFORE DRILLING OR SETTING ANY SLEEVES.
    - SEAL EXTERNAL WALL PENETRATIONS WHERE CONDUIT PASSES FROM A COLDER AREA TO A WARMER AREA.
  - PROVIDE THE PROPER CONNECTION AND/OR DISCONNECT AND OVER-CURRENT PROTECTION FOR OWNER AND DIVISION 15 EQUIPMENT, BASED UPON THE CONTRACT DOCUMENTS. VERIFY THIS INFORMATION WITH THE UNIT NAMEPLATE OR FIELD WIRING SCHEMATIC BEFORE ROUGH IN.
  - ELECTRICAL EQUIPMENT SHALL BE STORED IN A HEATED AND VENTILATED SPACE UNTIL READY FOR DELIVERY TO THE FINISHED EQUIPMENT SPACE ON THE SITE.
  - FOR FEEDERS AND EQUIPMENT CIRCUITS 40 AMPERE RATED AND ABOVE, THE INTENT OF THE DESIGN IS TO INSTALL A MAXIMUM OF THREE (3) CURRENT-CARRYING CONDUCTORS IN A SINGLE CONDUIT (RACEWAY), UTILIZING THE FULL CONDUCTOR CAPACITIES ALLOWED AND DEFINED IN THE NATIONAL ELECTRICAL CODE ARTICLE 310. COMBINING OF FOUR (4) OR MORE CURRENT-CARRYING CONDUCTORS IN A SINGLE RACEWAY MUST BE REVIEWED AND APPROVED BY THE OWNER'S REPRESENTATIVE.
  - UNLESS SPECIFICALLY REQUESTED BY THE OWNER'S REPRESENTATIVE, CEILING AND WALL MOUNTED OCCUPANCY SENSORS SHALL BE SET WITH DEFAULT TIMES, AS FOLLOWS:
    - PUBLIC RESTROOMS - 30 MINUTES
  - CEILING MOUNTED OCCUPANCY SENSORS SHALL BE POSITIONED AND ADJUSTED BY THE CONTRACTOR TO ELIMINATE NUISANCE OPERATION OF THE CIRCUIT FROM HVAC DIFFUSERS OR MOVEMENT OUTSIDE THE CONTROLLED AREA OR ROOM.

LUMINAIRE SCHEDULE								
TYPE	LUMINAIRE		LAMP TYPE	DESCRIPTION	MOUNTING	MANUFACTURER	CATALOG NUMBER	REMARKS
	WATTS	VOLTS						
A	35	120	LED 4000K 4300 LUMENS	4' SURFACE MOUNTED LINEAR STRIP	SURFACE	LITHONIA LIGHTING	CSV-T-L48-5000LM-MVOLT-40K-80CRI	
B	14	120	LED 4000K 950 LUMENS	OUTDOOR WALL SCONCE WITH DARK BRONZE FINISH	WALL / SURFACE	LITHONIA LIGHTING	OLLWD-LED-P1-40K-120-DOB	
C	40	120	LED 4000K 5500 LUMENS	LED SQUARE CANOPY LUMINAIRE	SURFACE	PORTOR LIGHTING	PT-CAT-2-LW-3CP	
P1	25	120	LED 4000K 3000 LUMENS	LED FLOOD LIGHT WITH BLACK MATTE TEXTURED FINISH AND NARROW DISTRIBUTION	KNUCKLE	BEACON	RFL2-44L-25-4K7-N-UNV-K-BLT	
P2	42	120	LED 4000K 1800 LUMENS	IN-GRADE LED UPLIGHT IP68 RATED	IN GRADE	KIM LIGHTING	LTV82SS-WW-18L-4K-UV-PL-RCA82	
EM	2.5	120	LED	WHITE THERMOPLASTIC DUAL SQUARE HEAD EMERGENCY LIGHT	SURFACE / WALL	COMPASS LIGHTING	CU2SQ	1

#### SCHEDULE NOTES:

- WIRE EMERGENCY LIGHTS AHEAD OF ALL CONTROLS.

MECHANICAL EQUIPMENT WIRING SCHEDULE															
*DC*= DIRECT CONNECT		*VFD*= VARIABLE FREQUENCY DRIVE		☑ COMBINATION STARTER AND FUSED DISCONNECT		☑ FUSED DISCONNECT		☐ NON-FUSED DISCONNECT		\$M MANUAL MOTOR STARTER		S SWITCH		J JUNCTION BOX	
ITEM NO.	EQUIPMENT	HP	KW	MCA	FLA	VOLTS	φ	CONNECTION BY EC	PANEL / CKT NO.	CIRC BKR AMPS	POLES	WIRING AND CONDUIT	NOTES		
EW-1	ELECTRIC WATER HEATER	-	2.5	-	-	120	1	☐ 30AS	LP / 2	30	1	2-10 AWG & 1-10 AWG GND - 3/4" C.			
WH-1	ELECTRIC HEATER	-	2.75	-	-	120	1	SEE NOTE 1	LP / 4	25	1	2-10 AWG & 1-10 AWG GND - 3/4" C.	①		
EF-1	ELECTRIC HEATER	-	0.04	-	-	120	1	SEE NOTE 2	LIGHTING CIRCUIT	20	1	2-12 AWG & 1-12 AWG GND - 3/4" C.	②		
EF-2	ELECTRIC HEATER	-	0.04	-	-	120	1	SEE NOTE 2	LIGHTING CIRCUIT	20	1	2-12 AWG & 1-12 AWG GND - 3/4" C.	③		
ERV-1	ENERGY RECOVERY VENTILATOR	-	0.03	-	-	120	1	S	LP / 6	20	1	2-12 AWG & 1-12 AWG GND - 3/4" C.			

#### SCHEDULE NOTES

- EQUIPMENT FURNISHED WITH INTEGRAL DISCONNECT SWITCH.
- CONNECT EXHAUST FAN TO THE LIGHTING CIRCUIT IN EACH ROOM. FANS SHALL OPERATE ON/OFF WITH LIGHTS IN ROOM.

CIRCUIT BREAKER PANEL SCHEDULE											
PANEL LP		AMP 200		VOLTAGE 120/240V-1Ø-3W							
INTERRUPTING CAPACITY 10,000		SPACES 24		AMPS RMS SYM 10,000		MAIN MLO		MOUNTING SURFACE			
LOAD DESCRIPTION	CONTINUOUS LOAD	NON-CONTINUOUS LOAD (80%)	RECEPTACLE LOAD	ØA	ØB	ØA	ØB	ØA	ØB	LOAD DESCRIPTION	
RR LIGHTS	0.4									EW-1	
RR RECEPTACLES			0.6							WH-1	
HAND DRYER		1.0								ERV-1	
HAND DRYER			1.0							PAVILION RECEPT.	
WATER F. STATION		1.0								PAVILION RECEPT.	
SPARE										0.4 PAVILION LIGHTS	
SPARE										0.4 MEMORIAL LTG	
SPARE										SPARE	
SPACE										SPACE	
SPACE										SPACE	
SPACE										SPACE	
SPACE										SPACE	
SPACE										SPACE	
KW SUB-TOTALS		KW		0.4	0.4	2.6	2.8	0.4	0.4		

CONNECTED LOAD PER PHASE

PHASE A: 5.8 KWC, 48.3 AMPS

PHASE B: 5.2 KWC, 42.9 AMPS

TOTAL CONNECTED LOAD: 11.0 KWC, 45.6 AMPS

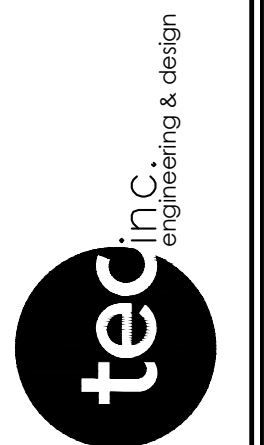
TOTAL DEMAND LOAD: 9.3 KW, 38.7 AMPS

SCHEDULE REMARKS

BY	TGP	DATE	DESCRIPTION
		4/20/26	FOR PERMIT

33851 Curtis Blvd. #216  
 Elyria, Ohio 44025  
 1-330-963-8787  
 1-440-933-1289  
 www.tecinceng.com

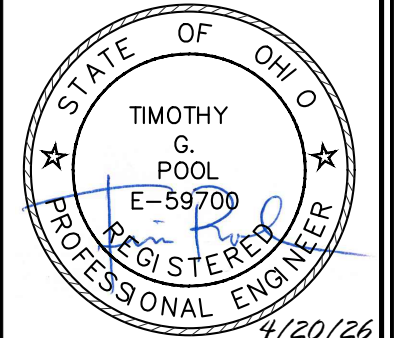
cleveland | columbus | pittsburgh



**LAKEFRONT LODGE  
 PARK RESTROOM**  
 30435 LAKESHORE BLVD  
 WILLOWICK, OHIO

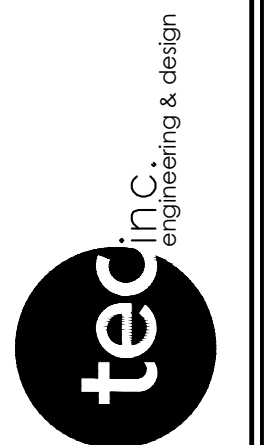
**ELECTRICAL  
 SPECIFICATIONS AND  
 SCHEDULES**

DATE: 03/27/26  
 DESIGNED: MG  
 APPROVED: TGP  
 TEC PROJECT: 26134  
 SHEET NO.



REV. NO.	DESCRIPTION	DATE	BY
1	FOR PERMIT	4/20/26	TGP

33851 Curtis Blvd., 216  
 Easton, Ohio 44075  
 T 440.953.8781  
 F 440.953.1289  
 www.tecinceng.com  
 cleveland | columbus | pittsburgh

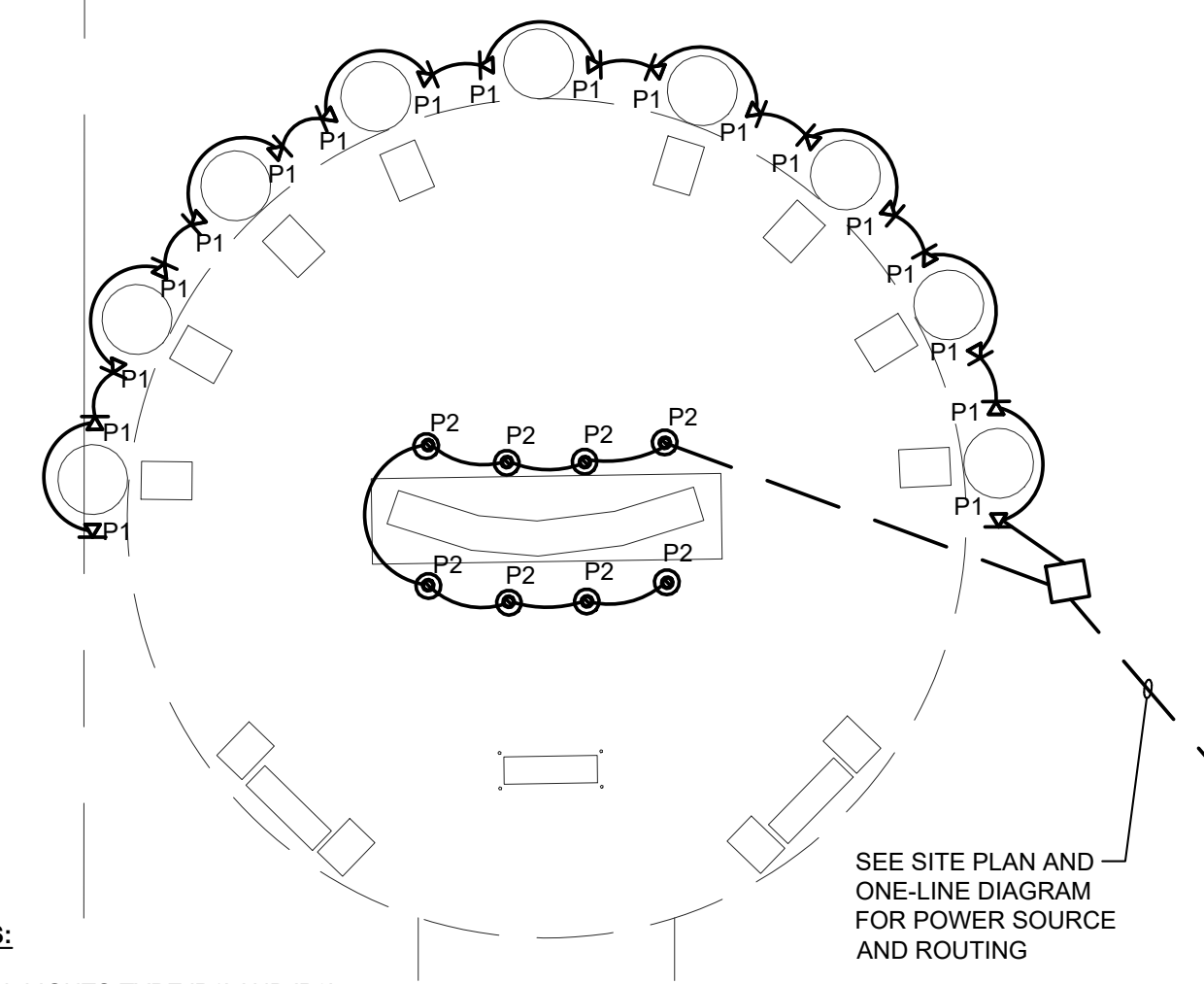
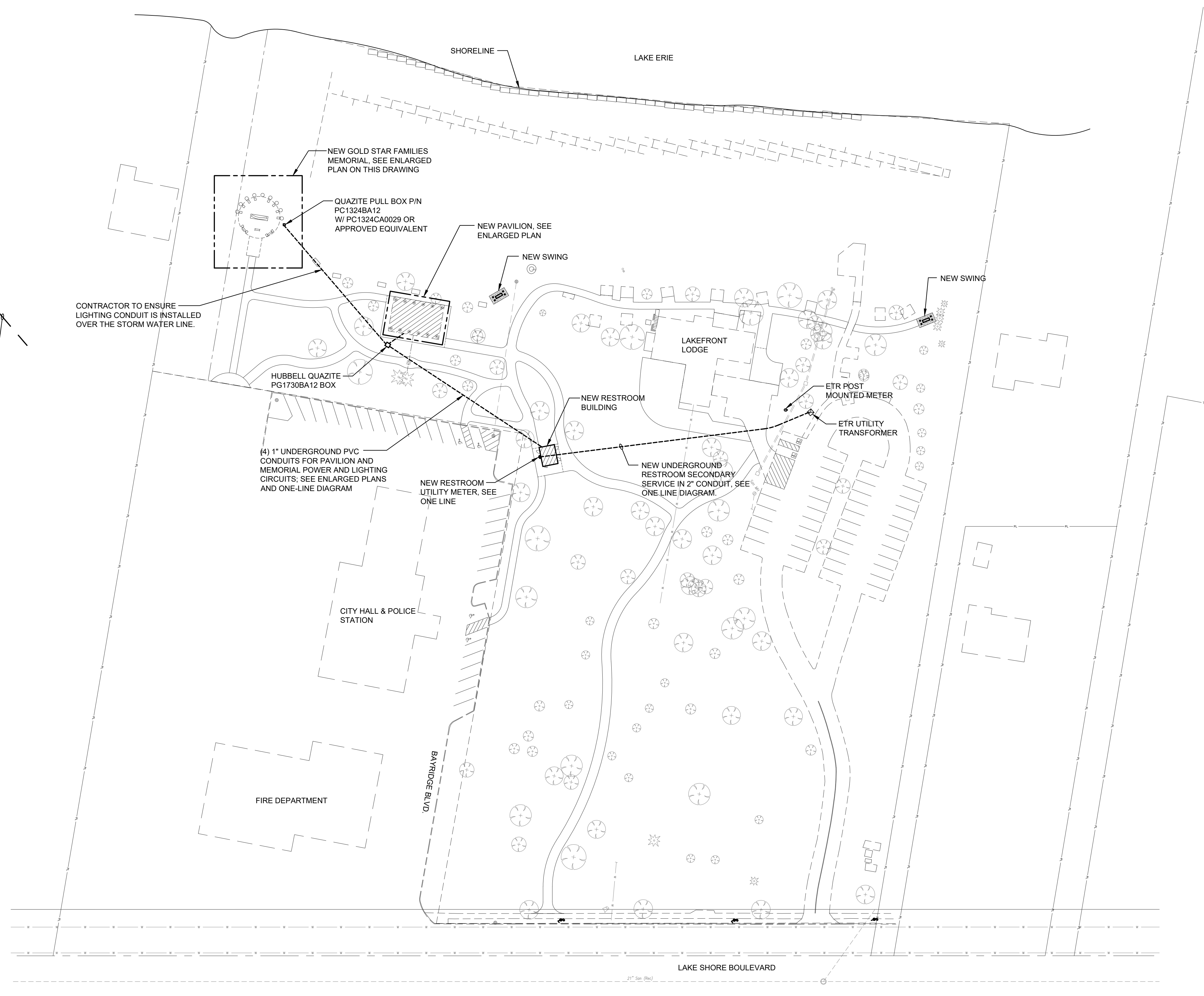


**LAKEFRONT LODGE  
 PARK RESTROOM**  
 30435 LAKESHORE BLVD  
 WILLOWICK, OHIO

**ELECTRICAL SITE PLAN**

DATE: 03/27/26  
 DESIGNED: MG  
 APPROVED: TGP  
 TEC PROJECT: 26134  
 SHEET NO.

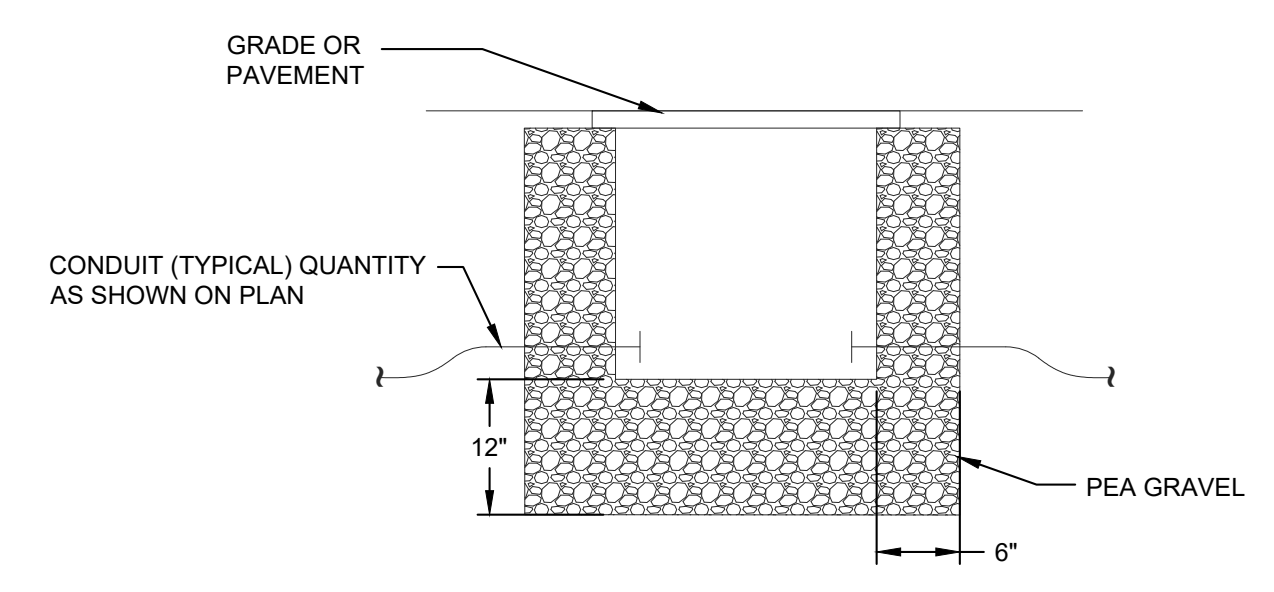
**ES-1**



**NOTES:**

1. ALL LIGHTS TYPE 'P1' AND 'P2' SHALL BE CONTROLLED VIA EXTERIOR MOUNTED PHOTOCELL LOCATED AT THE MEMORIAL.
2. PROVIDE ADAPTERS OR TERMINAL BLOCKS TO ACCOMMODATE TERMINATIONS OF LARGER SIZE WIRE ON CIRCUIT BREAKERS AND AT DEVICES AS NECESSARY.

**WILLOWICK GOLD STAR FAMILIES MEMORIAL ENLARGED LIGHTING PLAN**  
 SCALE: 1/8" = 1'-0"



**COMPOSITE GRADE BOX DETAIL**  
 NO SCALE

**ELECTRICAL SITE PLAN**  
 SCALE: 1" = 50'-0"